

Showplace cabinetry for the bath



ShowplaceWood.com



An overview
of the many ways
Showplace cabinetry
can create lovely bath
settings in the home.



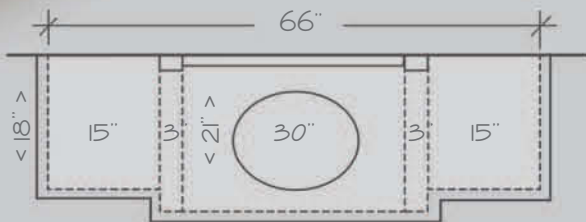
Shaker flavor



This attractive design brings a subdued Shaker inspiration to a moderate space. The clean lines and understated ornamentation reflect the Shaker theme, while the beaded-panel Summit door style contributes an element of linear texture. The beaded panels also bring out the subtle caramel glazing on the warm Truffle stain. The dignified mirror frame is finished to match, and contributes an element of flowing motion with its arched valance. Note also how the stacked moldings bring a subtle touch of smooth grace.



Style: Summit
Species: Cherry
Finish: Truffle
Glaze: Carmel



See page 6 for more details.

Cottage grace

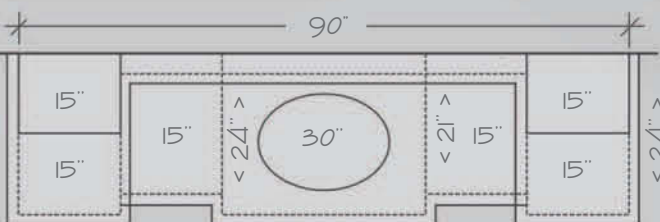
The cottage design theme can be worked in many ways. Ranging from the simplicity of a traditional country look, to a more sophisticated European interpretation, cottage is conducive to personal expression. This lovely bath design is on the elegant end of the range, with an international overlay adding sleek, uniform lines. Elements like the crown moldings, furniture base, and subtle frame chamfers move the impression toward the Old World. At the same time, the distressed paint finish is a distinctly historic feature that keeps the creation firmly in the comfortable cottage realm.



See page 6 for more details.



Style: Savannah
Species: Maple
Finish: Linen
Glaze: Ebony

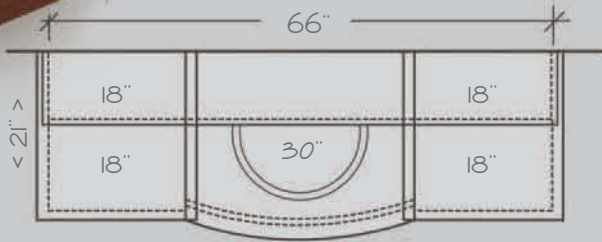


Modern mood

The modernist designer believes form and function should unite, ornamentation should be minimal, and the simple beauty of the materials should shine through. This sleek, clean design captures that philosophy with its linear clarity and functional essence. The Pendleton style contributes understated poise, while the frosted glass doors blend perfectly with a brushed-metal backsplash. The curving skirt beneath the sink adds a bit of depth and flow to the formal linearity.



Style: Pendleton
Species: Red Oak
Finish: Chestnut



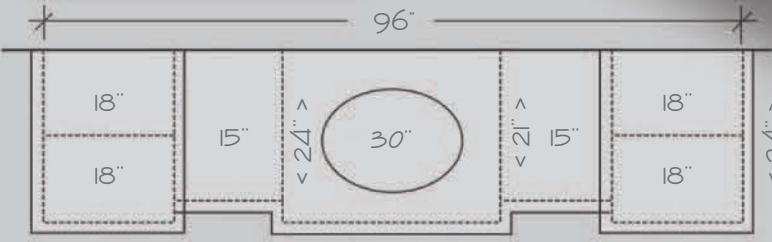
See page 7 for more details.

Classic comfort

With a refined flavor and quiet dignity, this Showplace bathroom creation sets a tone of classic comfort. The mitered Waterford door is both visually intricate and quietly elegant. Soaring scale and generous proportions create an impression of substance, while the expressive detail of the moldings and fluted elements add visual intrigue. Varied cabinet heights and depths also invigorate the design, while open cabinets play both display and storage roles. The creativity extends right to floor level, with a handsome combination of feet and base moldings. All in all, a truly stunning and classic creation.



See page 7 for more details.



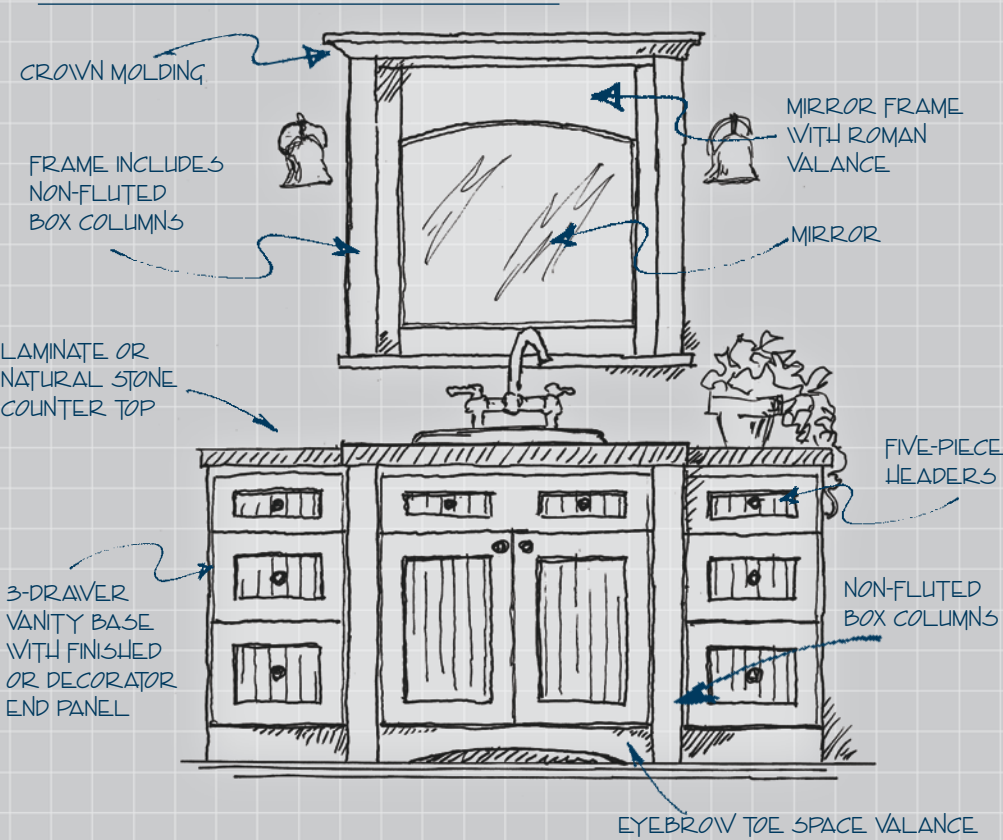
Style: Waterford
Species: Maple
Finish: Hazelnut
Glaze: Ebony



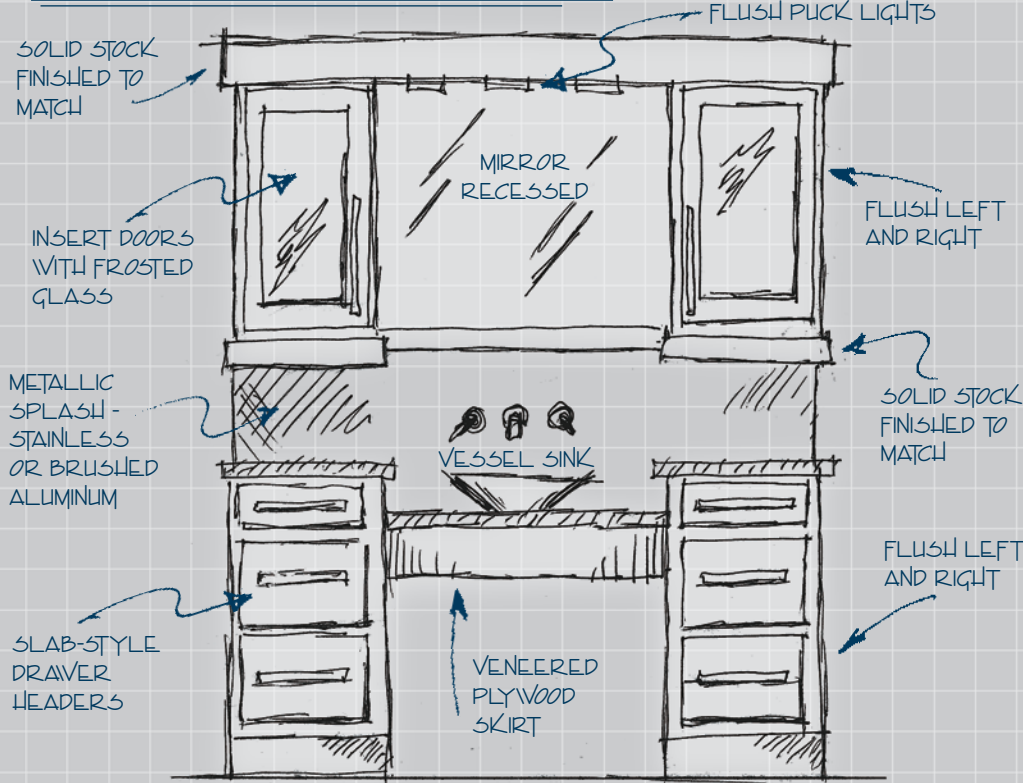
DESIGNING WITH
SHOWPLACE

When considering any of the bathroom designs shown here, bear in mind the inherent flexibility of Showplace cabinetry. There's a versatile range of door styles from which to choose, in both standard and specialty wood species. Each wood has a unique selection of stains that corresponds to the individual species. And each stain can be enhanced with glazes or distressing. Go for the solid-color appeal of a painted finish, or explore the distinctive Vintage finishes. To learn more about this wide array of choices, talk over your plans, tastes and design goals with a Showplace designer.

PAGE 2 ~ SHAKER FLAVOR



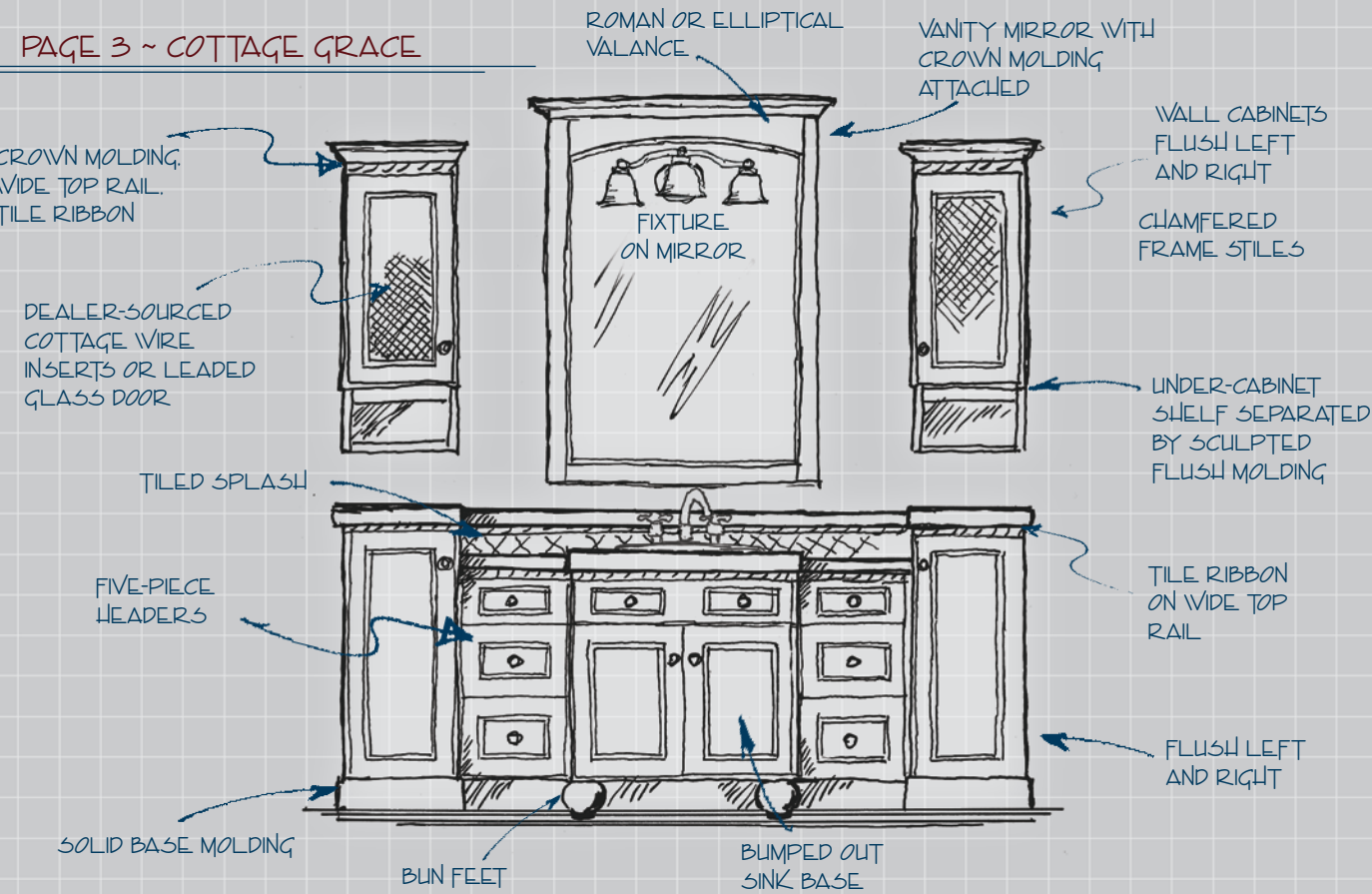
PAGE 4 ~ MODERN MOOD



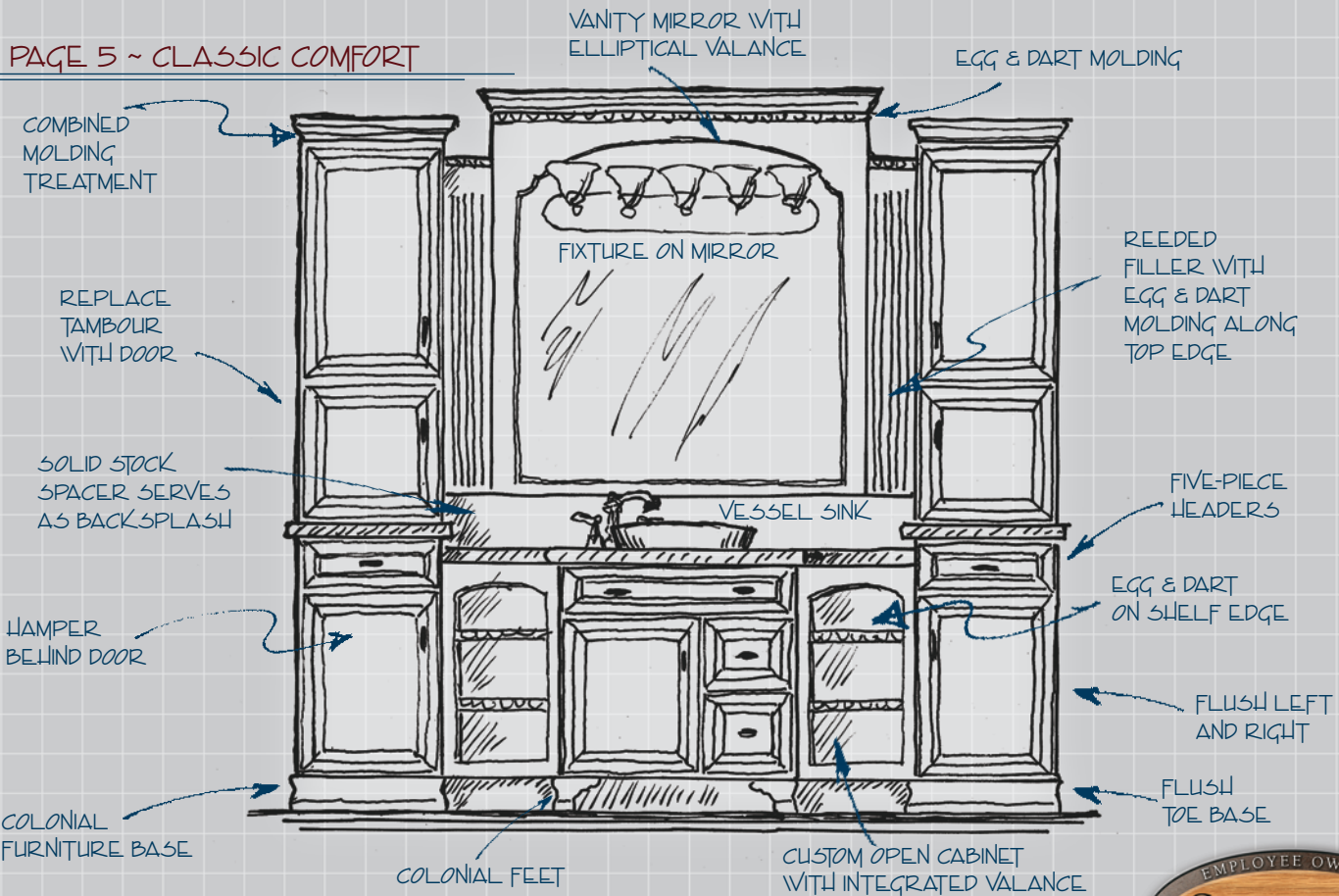
FITTING YOUR SPACE
AND YOUR VISION

We understand that your personal vision is unique. We also understand that the space you have to work in is unique too, and a fixed set of stock sizes may not get the job done. That's why Showplace offers a full spectrum of custom modifications, all at realistic pricing. You can adapt these designs to your home with our sizing modifications. Or you can adapt the look to suit your theme with such things as different valances, fillers or molding trim. You can also add true custom touches, like the open cabinets with integrated valances shown below. Talk to your Showplace designer about all the creative freedoms open to you.

PAGE 3 ~ COTTAGE GRACE



PAGE 5 ~ CLASSIC COMFORT





Above: The wide-framed Galena door style is fresh and inviting in Linen with Pewter glazing. Note the tall linen storage cabinet on the right.

Left: The clean lines of this Mission-inspired design are the perfect complement to the unique grain patterns of Showplace quartersawn white oak. The lovely Autumn finish is accented with Ebony glazing.



Above: A large whirlpool tub is bracketed by matching maple Hamilton vanities on each end.

Left: The mitered Waterford door in rich cherry Truffle makes this his-and-hers master bath uniquely appealing.



Above: A lot of visual impact in a very small space. This small entryway guest bath is rich and warm in Showplace cherry in the Merlot stain. Note how a metallic vessel sink adds a distinctive touch, while the French feet contribute subtle elegance.



Above and above right: Showplace cabinet bases are offered in several styles. They create an elegant, freestanding-furniture appearance.



Left: Showplace components create a surround for a large whirlpool tub, and give access to the tub's mechanism,



Above: A Showplace vanity in rich, dark cherry Coffee extends an elegant welcome in this guest bath.



Left and above: Even when ambitions run to the opulent, Showplace is right at home. Showplace Lyptus creates comfortable elegance above, while the inventive combination of split spindles, decorative elements and outsourced carvings yields the stunning creation shown at left.



10.1

Above: This his-and-hers master bath repeats design themes from other areas of the home, and creates a setting that is both versatile and comfortable. Maple Covington in the light Taupe stains fits will with the room's soft palette.



10.3

Above: The expressive character of Showplace Lyptus is front and center in this handsome design. Note how the optional distressing softens corners and adds a look of graceful aging to this lovely setting.



10.2

Above: The timeless charm of red oak makes this eclectic creation comfortable and homey. The glass vessel sink is a strong focal point, while the whimsical curling metal pulls add personality to the room.

Below: A creative combination of open and closed spaces highlights this unique design. Rustic alder in the deep Coffee finish creates strong contrasts and enveloping warmth.



10.4



11.1

Above: Showplace solid paint finishes are offered in a flexible range of tones and glazes.



11.2

Above: This classic vanity design uses the Covington door in maple Taupe.



11.3

Above: This small open vanity is in a guest bedroom of a lake cabin.



11.4



11.5

Above: The distinctive Brushed Vintage finish in Soft Yellow gives this bath a bright personality and unique character.

Left: The mitered cherry Arlington door style communicates elegance, while the Vintage Autumn finish adds handcrafted heirloom appeal in this spacious his-and-hers master bath creation. (Also shown on the cover.)

Furniture vanities

It's easy to get the elegant look of freestanding furniture with Showplace **pre-assembled vanities**. These five versatile designs come ready to install, in your choice of door style, wood and finish. Add your top, sink and hardware, and your furniture vanity creation is complete. You can also create a mirror frame to match any Showplace door style and finish as shown at left. Talk to your Showplace designer for more great ideas...



ShowplaceWood.com



Showplace Wood Products is a certified member of the Environmental Stewardship Program of the Kitchen Cabinet Manufacturers Association.



WARNING: Like trees or any other products made of wood, machining, sanding, sawing, or drilling this product may produce wood dust, a substance known to the State of California to cause cancer. Avoid inhaling wood dust or use a dust mask or other safeguards for personal protection.



1-877-607-2200
Harrisburg, South Dakota